

Stijlnummer	5T135	
Collectie	Noble Materials	
Producttype	Tapijttegel	
Construction	Standard	Data + Performance
Type Fabricage	ISO 2424	tufted 1/10" 39.4 per 10cm
Verfmethode	EN 994	100% In Oplossing Gevefnd
Productformaat	EN 994	61 cm x 61 cm 24 in x 24 in
Vezeel	ISO 2424	Ecosolution Q® Polyamide 6
Totale Dikte	ISO 1765	7.4 mm
Afgewerkte Pooldikte	ISO 1766	3.8 mm
Totale Massa	ISO 8543	3561 g/m²
Getuft Gewicht	ISO 2424	1017 g/m²
Effectieve Poolmassa	ISO 8543	545 g/m²
Pooldichtheid	ISO 8543	0.146 g/cm³
Totaal Gerecycleerde Inhoud		64% (pre-consumer 64% post-consumer 0%)

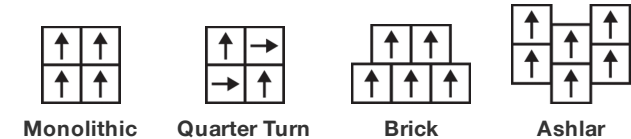


Gegevens

Steken	ISO 1763	130,000/m² 33 per 10cm
Beschermende Behandelingen		SSP® Shaw Grondbescherming
Elektrostatische Weerstand	ISO 6356	≤ 2.0 kv (Stroll Test)
Gebruik Classificatie	EN 1307	32 Commercial General
Luxeklasse	EN 1307	LC2
Dimensionale Stabiliteit	EN 986	≤ 0.2%
Contactgeluidsisolatie	ISO 10140	22 Db (Predicted)
Geluidsabsorptieclassificatie	ISO 354/11654	0.15 Aw Class E (Predicted)
Warmteweerstand m² K/w	ISO 8302	0.086 M² K/W Tog 0.86
Weerstand Tegen Droog Uitglijden	ISO 13893	Pass/No Pulled Loops
Kleurvastheid Voor Licht	ISO 105-B02	>6
Ontvlambaarheid	EN 13501-1	Cfl-S1 (Adhered Testing)
Stoel Met Wieltjes	EN 985	≥2.4 Continuous Use

Levenslang Commercieel Beperkt subject to installation in full accordance with manufacturer's instructions and a regular effective cleaning and maintenance programme.

Aanbevolen Installatiemethode



Corporate Headquarters +1 800 257 7429 | +1 706 532 7984 | Atlanta +1 404 853 7429 | Bengaluru +91 80 6773 0202 | Beijing +86 10 6568 588 | Chicago +1 312 467 1331 | Dubai +971 4 584 6956 | Hong Kong +852 2623 0371 | Latin America (Miami) +1 305 827 5912 | London +44 207 961 4120 | Los Angeles +1 800 233 1614 | Melbourne +61 3 9939 8543 | Mexico City +55 5010 7600 | Mumbai +91 22 6284 5050 | Nantong +86 400 800 7429 | New York +1 212 953 7429 | Paris +33 (0) 1 81 22 44 39 | San Francisco +1 415 955 1920 | Santiago +562 2431 5000 x 550 | São Paulo +55 11 3071 1702 | Shanghai +86 21 3338 4000 | Singapore +65 6733 1811 | Sydney +1 800 556 302

CE

13

EU.DOP/2895/CPR/1013/0116/T

OOSTERHOUT SHOWROOM, VAARTWEG 10, 4905

BL NETHERLANDS (NLD)

Notified Body 2895

UK

CA

22

UK.DOP/0338/CPR/1013/0116/T

SHAW EUROPE LIMITED BLACKADDIE RD,

SANQUHAR DG4 6DB, UNITED KINGDOM

Approved Body 0338

E1

HCHO

Cfl-s1

EN14041:2004/AC:2006

Coördinerende Producten

Carpet Tile: **Slab Tile, Honed Tile, Form Tile**Broadloom: **Monolith Woven, Base Metal Woven, Strata, Fault**

Kenmerken + Certificeringen

Certifications Below Apply Exclusively To The Carpet Tile Rug Itself And Not The Lokworx Tabs Adhesive

Declaration of Performance

Cradle to Cradle gecertificeerd™

Health Product Declaration (HPD)

Environmental Product Declaration (EPD)

Living Building Challenge (LBC)

Verklaar

nsf 140

Building Research Establishment (BRE)

Singapore Green Label

milieugarantie

productverpakking

land van herkomst

BREEAM Contribution Credit

Well V2 Contribution Credit

X08 Hazardous Material Reduction

Part 1: Limit Hazardous Materials Optimization

X10 Volatile Compound Reduction

Part 1 (A): Manage Volatile Organic Compounds (VOCs) Optimization

X11 Long Term Emissions Control

Part 2: Flooring Optimization

X13 Enhanced Material Precaution

Part 1: Select Optimized Materials Optimization

X14 Material Transparency

Part 1: Promote Ingredient Disclosure Optimization

Groen Leed Bijdragekrediet

"MR-krediet: openbaarmaking en optimalisering van bouwproducten
Milieuproductverklaringen - Optie 1: Milieuproductverklaring (EPD)""MR-krediet: Openbaarmaking en optimalisering van bouwproducten
Materiaalingrediënten - Optie 1: Rapportage materiaalingrediënten""MR-krediet: openbaarmaking en optimalisering van bouwproducten
Materiaalingrediënten - Optie 2: Optimalisering van materiaalingrediënten"MR Credit: Building Product Disclosure and Optimization
Sourcing of Raw Materials - Option 2: Leadership Extraction Practices"EQ-krediet: materialen met lage emissie Optie 1: Berekeningen per
productcategorie"MR Credit: Interiors Life-Cycle Impact Reduction
Option 3: Design for Flexibility

EU.DOP/2895/CPR/1013/0116/T

Silver Level (Version 4.0)

1,000 ppm (Parts Per Million) Disclosure

3de Partij Gecertificeerd in Overeenstemming Met ISO14044, ISO14025
& EN15804

Vrij Van Chemische Producten Die Op De Rode Lijst Staan

USA Voldoet Aan LBC | China Voldoet Aan LBC

Goud

A Offices/A+ Retail 0.433/0.583 Ecopoints USA

Gecertificeerd

Re[turn] Reclamation Program* | Through Our Environmental
Guarantee, Shaw Pledges to Transport And Recycle Any Ecoworx
Carpet.

100% Recycleerbaar

USA & China

Certificate of Approval

Schools/Offices/Health/Industrial Shed
Retail

C2C Silver Level (Version 4.0)

C2C Silver Level (Version 4.0)

Green Label Plus Certification: GLP9968

C2C Silver Level (Version 4.0)

C2C Silver Level (Version 4.0)

3rd Party Certified in Accordance with ISO14044, ISO14025 & EN15804

C2C Silver Level (Version 4.0) or HPD (Version 2.1)

C2C Silver Level (Version 4.0)

Environmental Guarantee: Re[turn] Reclamation Program* | Through
Our Environmental Guarantee, Shaw Pledges to Transport And
Recycle Any Ecoworx Carpet.

Green Label Plus Certification: GLP9968

Ecoworx Tile with Lokdots Installation System

Memberships

WGBC Framework
UKGBC
Emirates Green Building Council
Chemsec

WGBC Framework
UKGBC
Emirates Green Building Council
Chemsec

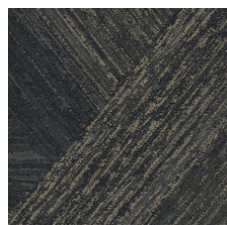
Lichtreflectiewaarde



Carrara Silver 33100
LRV 49



Alabaster Gold 33111
LRV 23.6



Colossal Bismuth 33496
LRV 5.4



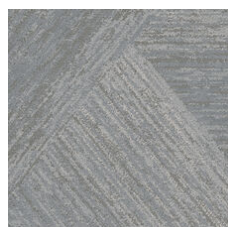
Onyx Silver 33505
LRV 4



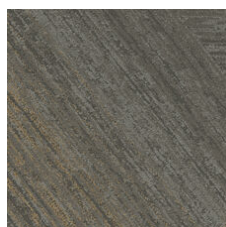
Element Platinum 33506
LRV 24.5



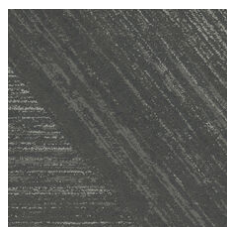
Forge Platinum 33518
LRV 15.9



Talc Platinum 33535
LRV 22.7



Cornerstone Cop 33555
LRV 9



Slate Palladium 33595
LRV 6.4

Aanvullende Informatie

* To learn more about the recyclability of our products and our re[TURN], please visit shawcontract.com/sustainability.

**Meets or exceeds all local and national regulations in country of manufacture.

***This carpet is manufactured to be ADA compliant, but to be fully ADA compliant, the end-user must ensure the carpet is adhered to the floor and installed as outlined in the ADA standards.

[Installation Guidelines](#)

[Maintenance Guidelines](#)

[levenslang commercieel beperkt](#)

Specifications are subject to nominal manufacturing variance. Material supply and/or manufacturing processes may necessitate changes without notice.

This product is an exclusive design and may not be duplicated in any manner. Use of this design in the creation of another product design is also strictly prohibited.

Visit shawcontract.com/testing for more information.



PVC-Free

Corporate Headquarters +1 800 257 7429 | +1 706 532 7984 | Atlanta +1 404 853 7429 | Bengaluru +91 80 6773 0202 | Beijing +86 10 6568 588 | Chicago +1 312 467 1331 | Dubai +971 4 584 6956 | Hong Kong +852 2623 0371 | Latin America (Miami) +1 305 827 5912 | London +44 207 961 4120 | Los Angeles +1 800 233 1614 | Melbourne +61 3 9939 8543 | Mexico City +55 5010 7600 | Mumbai +91 22 6284 5050 | Nantong +86 400 800 7429 | New York +1 212 953 7429 | Paris +33 (0) 1 81 22 44 39 | San Francisco +1 415 955 1920 | Santiago +562 2431 5000 x 550 | São Paulo +55 11 3071 1702 | Shanghai +86 21 3338 4000 | Singapore +65 6733 1811 | Sydney +1 800 556 302

© 2024 Shaw Industries Group, Inc., a Berkshire Hathaway Company
May 16, 2024

3 of 3